



DL 06-130/T

- quick mounting
- shock-resistant housing
- high efficiency

The 6W powered speaker is equipped with a 130mm full-range loudspeaker and a 100V transformer with 3 power adjustments. The powder coated metal similar in RAL 9010 guarantees long-term stability. Quick and easy mounting with spring clamps and short tension distance. The speaker is connected by a 2-pin push-clamp.

Special paint of the speaker in 4-digit RAL- or NCS- colour available at extra cost.

This speaker is suitable for a ceiling strength of about 2 – 45 mm. Our specification is primarily related to solid ceilings, for ceilings with soft materials a higher ceiling thicknesses could be necessary. In addition, stronger cables and other fittings may also result in changes of the appropriate setup. With regard to the variety of materials and manufacturers, we recommend to build in a sample of the speaker to match the requirements accurately.

Technical Data

Description	DL 06-130/T
Power	6/3/1,5 W
Frequency Range	90 - 15.000 Hz
Frequency Response	70 - 17.900 Hz
SPL 1W/1m, peak	93,8 dB
SPL Pmax/1m, peak	101,6 dB
Sensitivity 1W/1m	87,3 dB
Dispersion (-10dB)	178° (h) / 178° (v)
Temperature range	-20 / +80 °C
Dimensions	180x98mm
Weight (net)	0,86 kg
Colour	RAL 9010
Connector	2-pin push clamp
Mounting	Quick fit mounting
Packing Unit	12
Accessories	F 130
Ceiling Cut-out	162 mm

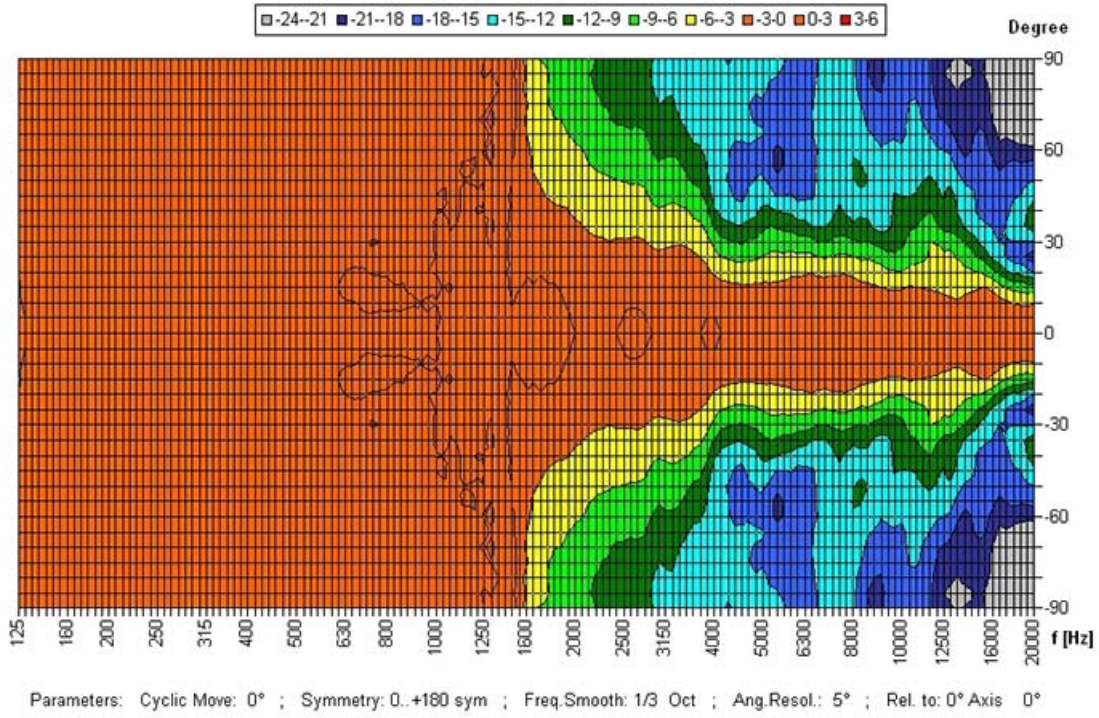
Please note: Because of many different types of ceiling materials and ceiling strengths we recommend to build in a sample of the speaker to match the requirements accurately.

Product Attributes

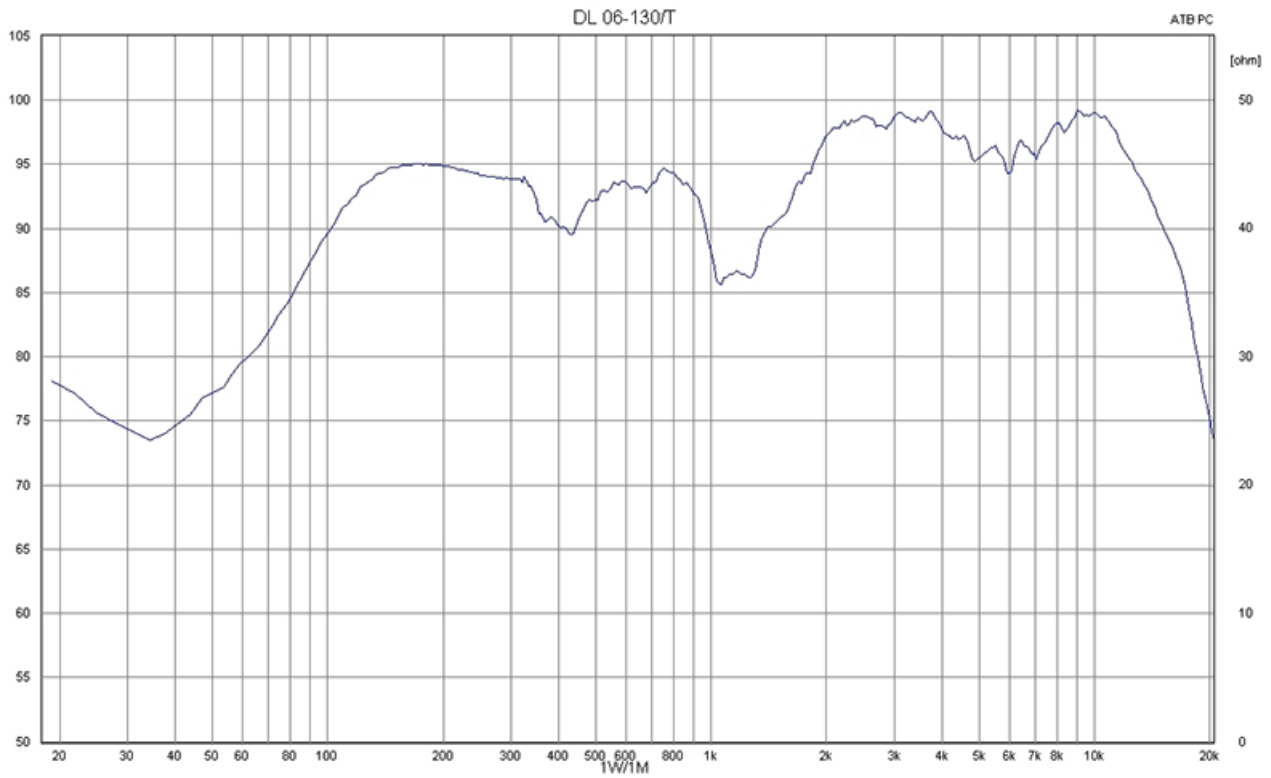


Polar Diagrams

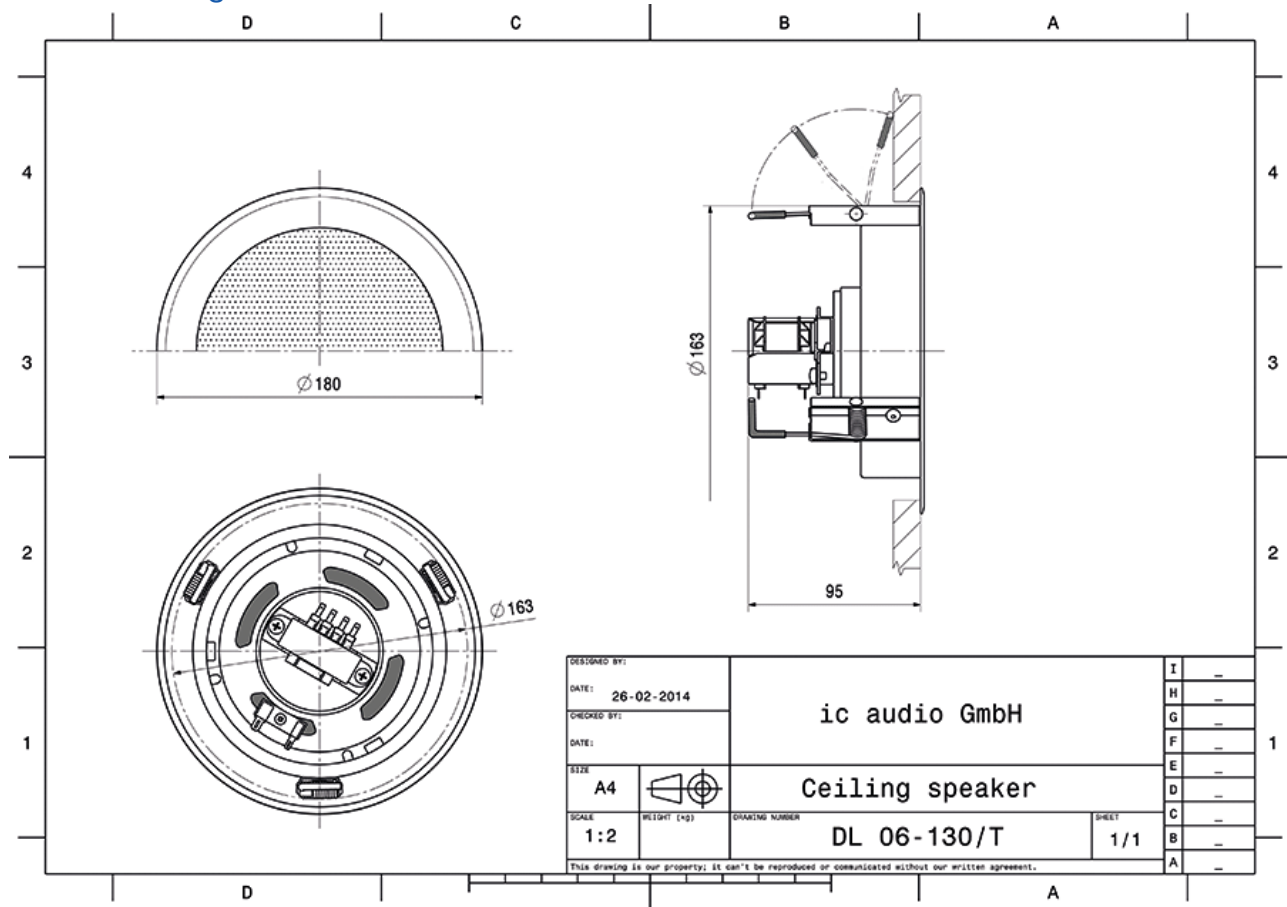
Copyright by Four-Audio GmbH & Co KG Licensed to AAC



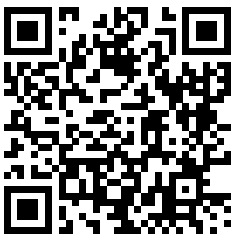
Frequency Response Diagrams



Technical Diagrams



Measurements according to DIN IEC 268-5 | RoHS compliant (2011/65/EU)



Article Nr.:
50617800

Packing Unit:
12

